

ALUMINIUM IN ARCHITECTURE

SURFACE TREATMENT

SURFACE TREATMENT AT BWB

Anodised surfaces from BWB protect aluminium against weathering influences for decades and make it a resistant material for façades and windows. Thanks to unique coating processes, which BWB continuously perfects, the highest colour fastness and weathering resistance can be guaranteed.

ANODISING ALUMINIUM

- ▶ provides long-term protection against weathering influences
- ▶ emphasises its natural structure
- ▶ refined in various natural shades – from discreet tinting to intensive colouring
- ▶ guarantees highest colour and light fastness
- ▶ enables an energy-efficient building envelope
- ▶ means a low maintenance effort
- ▶ offers additional effects with grinding and brushing
- ▶ conserves resources: can be dismantled into individual components and 100% recyclable



Photos: Beat Bühler www.beatbuehler.ch

BASIC PROCESS

NATURAL

Anodising aluminium produces a resilient and corrosion-resistant protective layer of aluminium oxide. In the process, the aluminium retains its metallic character.

COLOURING

The wide colour spectrum of BWB ranges from discreet to eye-catching – for stylish architectural accents. The colouring process deposits the natural dye in the pores of the anodising layer. This sealing process produces extraordinarily high colour and light fastness.

NATURAL

Natural EV1



COLINAL

BWB-Colinal 3115



BWB-Colinal 3145



BWB-Colinal 3165



BWB-Colinal 3175



BWB-Colinal 3178



BWB-Colinal 3180



SANODAL®

BWB-Argentan 1



BWB-Argentan 2



BWB-Brass 1



BWB-Brass 2



BWB-Gold 1



BWB-Gold 2



Reben school centre Arbon



A complete overview of the various BWB colours and finishes can be found at the end of this brochure.

EXCLUSIVE PERMA PROCESSES

PERMABRONZE

BWB-Bronze impresses with its natural and earthy colour gradation. Whether for exquisite building envelopes or accentuated window constructions – Permabronze is lively in appearance and lends a special depth. Combined bronze colours together with contrast materials are particularly effective.

BWB-Bronze 3



BWB-Bronze 4



BWB-Bronze 5



BWB-Bronze 6



Townhouse Kriens



Photos: Ernst Schweizer AG, Hedingen | Architect: Burkhard Meyer Architekten BSA, Baden



PERMALUX

The BWB-Permalux process is anything but inconspicuous in its warm grey tones. Elegance and noble restraint make the difference. A Permalux building envelope appears not only timeless in its colouring, the surface finish is exceptionally resilient and highly resistant to corrosion as well as being colourfast and lightfast: a clear statement in architecture and design.

BWB-Permalux P1



BWB-Permalux P2



BWB-Permalux P3



BWB-Permalux P4



Ophthalmic Clinic of the Lucerne Cantonal Hospital

EXCLUSIVE PERMA PROCESSES

PERMACOLOR

The exclusive colour palette of BWB includes matt colour nuances: Permablue as a cool light shade or in the vibrant dark blue version, Permagreen in the soft light version or as a more intense green shade. We advise you on the targeted use of Permacolor for the attractive design of living spaces – or for unique, functional projects.

BWB-Permablue 1



BWB-Permablue 2



BWB-Permagreen 1

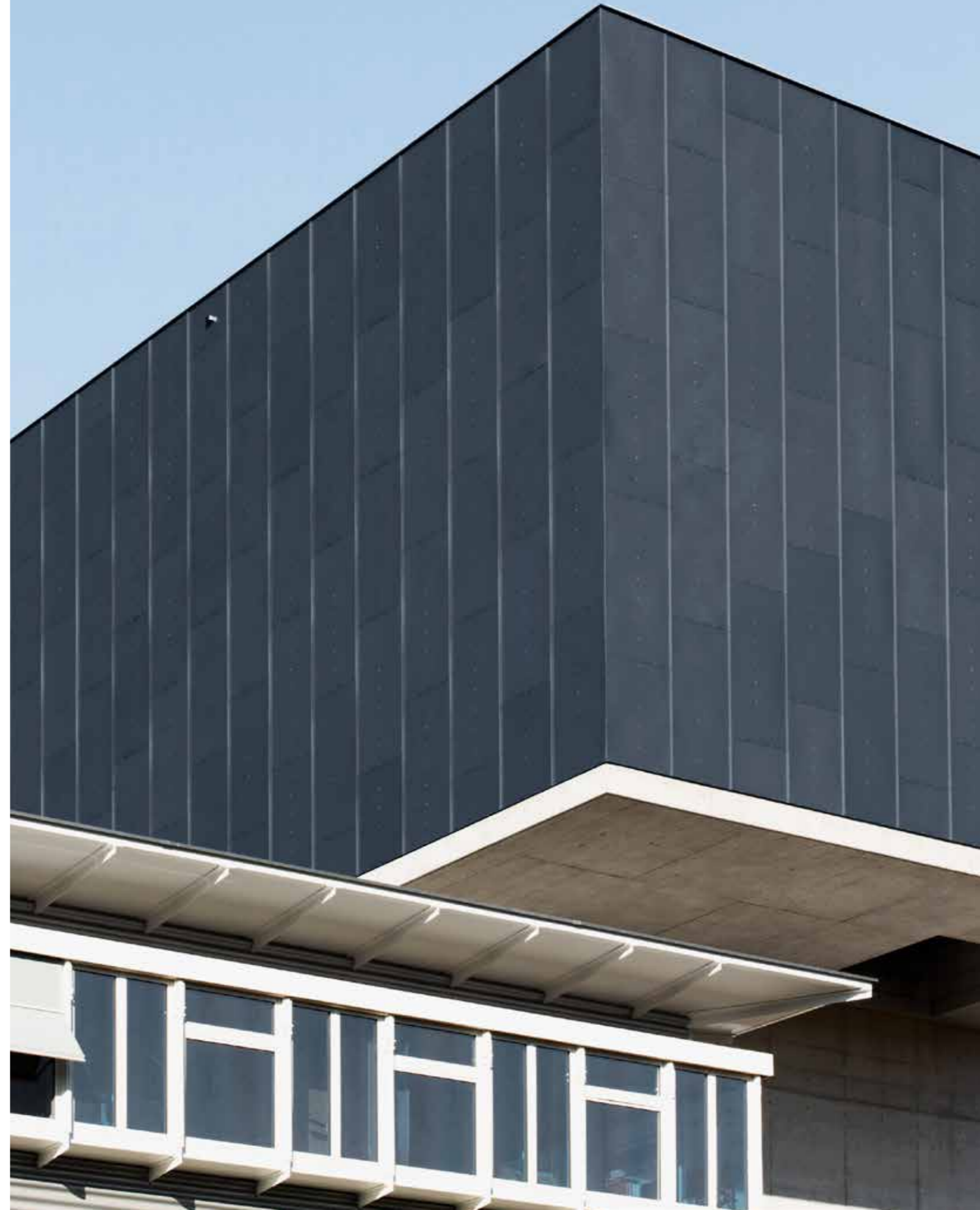


BWB-Permagreen 2

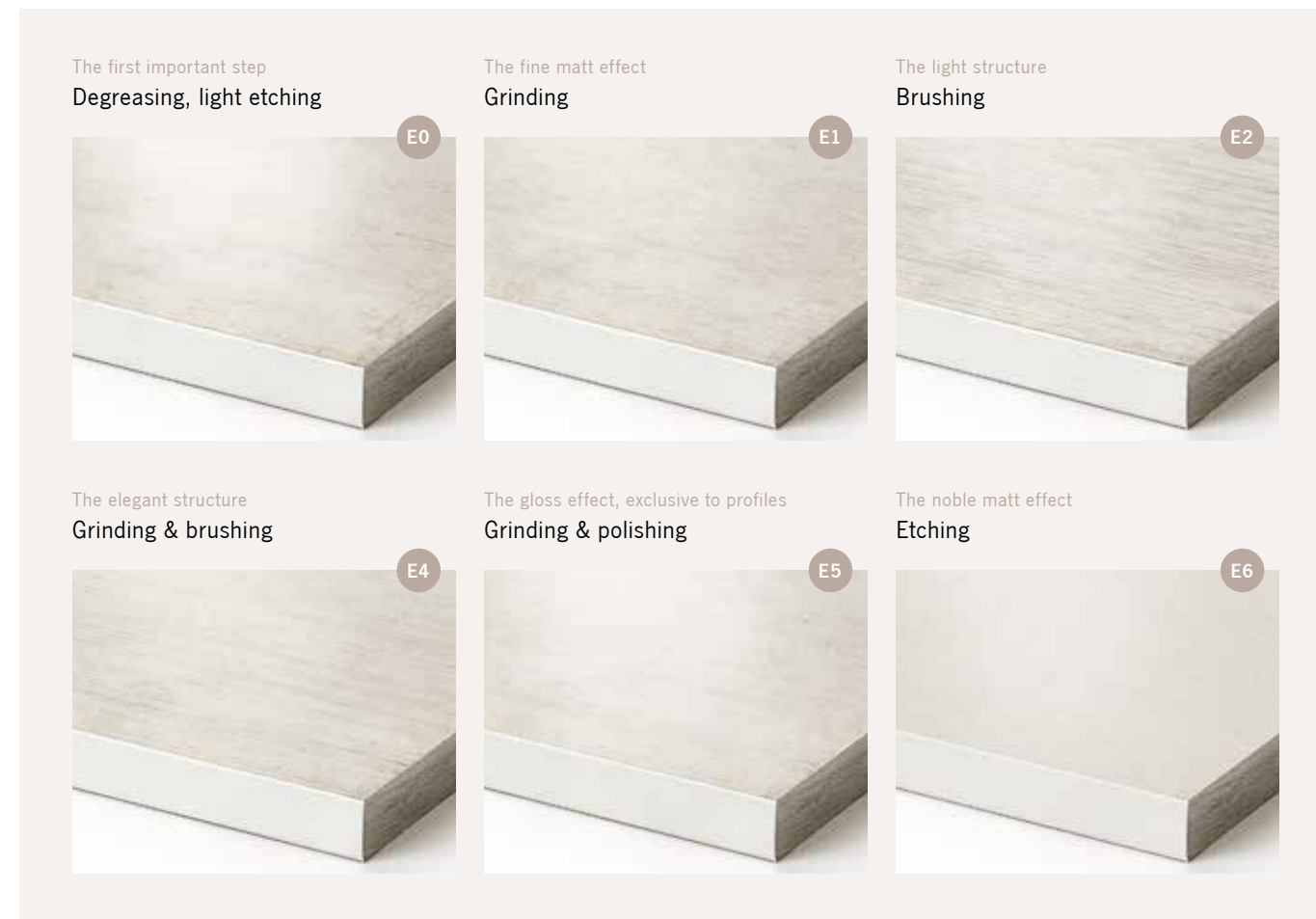


Waste Incineration Facility Winterthur

Photos: Peter Ruggie



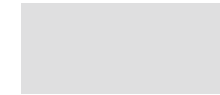
FINISHES



BASIC PROCESS

NATURAL

Natural EV1



COLINAL

BWB-Colinal 3115



BWB-Colinal 3145



BWB-Colinal 3165



BWB-Colinal 3175



BWB-Colinal 3178



BWB-Colinal 3180



SANODAL®

BWB-Argentan 1



BWB-Argentan 2



BWB-Brass 1



BWB-Brass 2



BWB-Gold 1



BWB-Gold 2



EXCLUSIVE PERMA PROCESSES

PERMABRONZE

BWB-Bronze 3



BWB-Bronze 4



BWB-Bronze 5



BWB-Bronze 6



PERMALUX

BWB-Permalux P1



BWB-Permalux P2



BWB-Permalux P3



BWB-Permalux P4



PERMACOLOR

BWB-Permablue 1



BWB-Permablue 2



BWB-Permagreen 1



BWB-Permagreen 2



SANDALOR® COLOUR RANGE

SANDALOR®

olive yellow



Sandalor® S100-1



Sandalor® S100-2



Sandalor® S100-3



Sandalor® S100-4



SANDALOR®

gold



Sandalor® S120-1



Sandalor® S120-2



Sandalor® S120-3



Sandalor® S120-4



SANDALOR®

red



Sandalor® S140-1



Sandalor® S140-2



Sandalor® S140-3



Sandalor® S140-4



SANDALOR®

blue



Sandalor® S150-1



Sandalor® S150-2



Sandalor® S150-3



Sandalor® S150-4



SANDALOR®

turquoise



Sandalor® S160-1



Sandalor® S160-2



Sandalor® S160-3



Sandalor® S160-4



EFFECTIVE ANODISING

Special pre-treatments such as grinding, brushing or etching allow additional varieties regarding the metallic character. Our sales team is pleased to be at your disposal.



Aluminium surfaces require an appropriate pre-treatment (E0 or E6) for chemical or anodic finishing. Contamination, corrosion or slight processing traces must be treated or concealed during chemical pre-treatment.

Mechanical pre-treatments (E1, E2, E4 and E5) are recommended for scratches, defects or irregularities on the surface. However, it is also used to achieve a special finish and according to the following surface processes. Depending on the chosen process, the surface thus becomes matt to glossy.



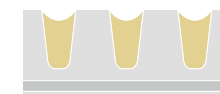
Colourless anodising
Cost-effective, standard process

Possible layer thicknesses: 10 µm (for indoor applications only) 15 µm, 20 µm, 25 µm



Electrolytic colouring/ electrocolouring
Very good colour homogeneity, no chalking

Further possible intermediate tones: Euras C-32, C-33, C-34 and C-35



Adsorptive colouring
No chalking



Combined electrolytic-adsorptive colouring
Striking colours, no chalking

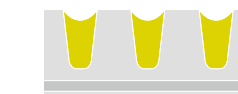


Integral colouring
Highest resistance, colour/light play, no chalking

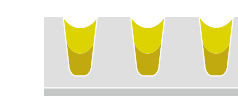
Permalux produces oxide layers that are exceptionally hard, resilient and corrosion-resistant.



Electrolytic colouring
Matt colours, colour/light play, no chalking



Adsorptive colouring
Bright colours, no chalking



Combined electrolytic-adsorptive colouring
Striking colours, no chalking

The BWB Group offers you a wide range of colours to choose from. For a correct colour evaluation, we recommend that you have a sample of the original parts and the intended aluminium alloy supplied to us.

BWB Consulting and Sample Service
T +41 58 861 90 10, architecture@bwb-group.com
www.bwb-group.com/architecture

As the Swiss Sandalor® partner, BWB offers the full Sandalor® colour range. Further information and the Sandalor® configurator can be found at www.sandalor.com



The colour samples shown in this colour chart are guide values. The reproduction of the anodised and dyed aluminium in accordance with the material is not possible in printing technology.

Please contact our sales team for samples of the aluminium components for architecture. Note that with the same treatment and colour, the appearance of sheets and profiles may vary. We also refer to the guidelines and quality regulations 41.06 for anodised aluminium façade components of the Schweizerische Zentrale Fenster und Fassaden (Swiss Central Window and Façade Manufacturers) SZFF and DIN 17611.



COLOR IS THE PLACE
WHERE OUR BRAIN MEETS
THE UNIVERSE.

PAUL CÉZANNE (1839-1906), FRENCH PAINTER

WE WILL BE PLEASED TO ADVISE YOU ON YOUR PLANS.

Do you require a sample or a quotation for your project?
Our sales team will be happy to help you.

Sample orders may also be placed conveniently online at www.bwb-group.com/architecture
or call us at T +41 58 861 90 10.

BWB Surface technology
www.bwb-group.com